

ANYTHING YOU CAN DO

from the Stage Production *Annie Get Your Gun*

Words and Music by
IRVING BERLIN

Moderato (♩ = 120)

ANNIE:

An - y - thing you can do, I can do bet - ter.

Musical score for Annie's first line of the song. It features a piano accompaniment on the left and a vocal line on the right. The piano part consists of chords and moving lines in the right hand, with some triplets in the left hand. The vocal line is in a soprano clef, with lyrics written below it. The key signature has one flat (B-flat), and the time signature is 4/4. The tempo is marked 'Moderato' with a metronome marking of 120 beats per minute.

FRANK: ANNIE: FRANK:

Musical score for the first part of the duet. It features a piano accompaniment on the left and two vocal lines on the right. The piano part consists of chords and moving lines in the right hand, with some triplets in the left hand. The vocal lines are in soprano clefs, with lyrics written below them. The key signature has one flat (B-flat), and the time signature is 4/4. The tempo is marked 'Moderato' with a metronome marking of 120 beats per minute.

I can do an - y - thing bet - ter than you! - No you can't. - Yes I can - No you can't.

Musical score for the second part of the duet. It features a piano accompaniment on the left and two vocal lines on the right. The piano part consists of chords and moving lines in the right hand, with some triplets in the left hand. The vocal lines are in soprano clefs, with lyrics written below them. The key signature has one flat (B-flat), and the time signature is 4/4. The tempo is marked 'Moderato' with a metronome marking of 120 beats per minute.

Yes I can. - No you can't. - Yes I can! - Yes I can!

Musical score for the final part of the duet. It features a piano accompaniment on the left and two vocal lines on the right. The piano part consists of chords and moving lines in the right hand, with some triplets in the left hand. The vocal lines are in soprano clefs, with lyrics written below them. The key signature has one flat (B-flat), and the time signature is 4/4. The tempo is marked 'Moderato' with a metronome marking of 120 beats per minute.

An y - thing you can be, I can be great er, Soon - er or lat - er I'm great -

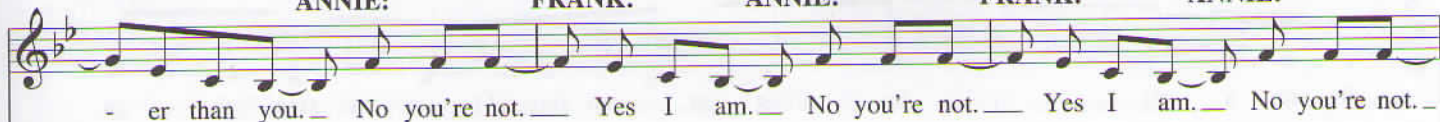
ANNIE:

FRANK:

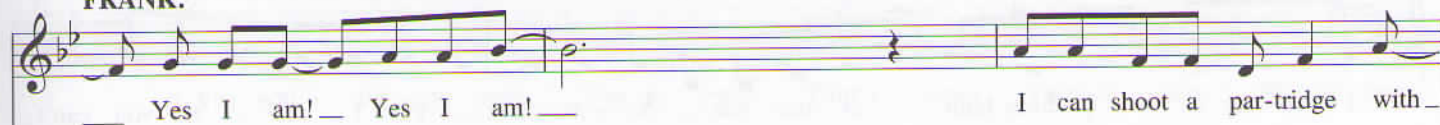
ANNIE:

FRANK:

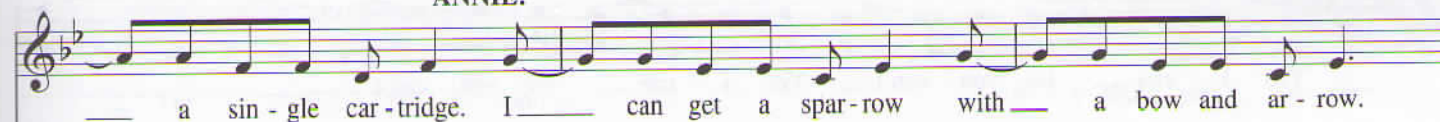
ANNIE:



FRANK:



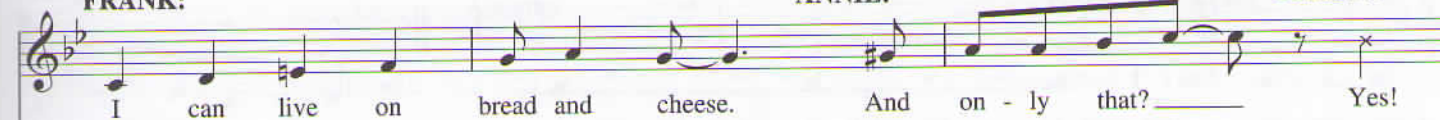
ANNIE:



FRANK:

ANNIE:

FRANK:



Musical score for the first system. The piano part includes dynamics *du* and *ff*. The vocal line for Annie includes the lyrics "Yes I can."

Musical score for the second system. The vocal lines for Annie and Frank include the lyrics "Yes I can", "No you can't", and "No you can't".

Musical score for the third system. The vocal lines for Annie and Frank include the lyrics "I can sing an y-thing high er than you."

Musical score for the fourth system. The vocal lines for Annie and Frank include the lyrics "So can a rat!" and "An - y - thing you can sing, I can sing high er."

ANNIE:

An - y - thing you can buy, I can buy cheap - er. I can buy an y - thing cheap -

FRANK:

ANNIE:

FRANK:

ANNIE:

FRANK:

- er than you. Fif ty cents. For - ty cents. Thirt - ty cents. Twen - ty cents. No you can't. -

Yes I can! Yes I can!

An - y - thing you can say, I

ANNIE:

FRANK:

Yes I can! Yes I can!

An - y - thing you can say, I

ANNIE:

FRANK:

can say soft er. I can say an - y - thing soft er than you. No you can't. -

No you can't. -

(optional tacet)

AN - y safe - With - out be ing caught? Sure. That's what I thought, you crook!

ANNE: FRANK: ANNE:

can drink it quick - er and get - ven sick - er, I can o pen

FRANK:

du

I can drink my liq nor fast - er - than a flick - er, I

FRANK: ANNE:

sf (p)

Yes I can. - No you can't. - Yes I can! - No you can't. - Yes I can! - Yes I can!

ANNE: FRANK: ANNE: FRANK: ANNE:

FRANK:

ANNIE:

An - y note you — can hold, I — can hold long er, I can hold an - y note long -

mp

FRANK:

ANNIE:

FRANK:

ANNIE:

FRANK:

er than you. — No you can't. — Yes I can. — No you can't. — Yes I can. — No you can't. —

ANNIE:

accel.

— Yes I can! — Yes I

accel.

ANNIE: In your hat. — No you can't. — Yes I can! — Yes I can!
 FRANK: —
 ANNIE: —

FRANK: In what you wear. I'd look bet - ter than you. In my coat? — In your vest. — In my shoes?
 ANNIE: —
 FRANK: —

ANNIE: An y - thing you — can wear, I — can wear bet - ter.
 ad lib. repeat

FRANK: Yes you can!
 a tempo
 colla voce
 ff

FRANK:

ANNIE:



mp

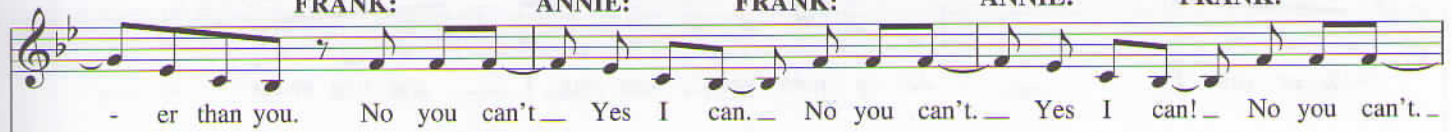
FRANK:

ANNIE:

FRANK:

ANNIE:

FRANK:

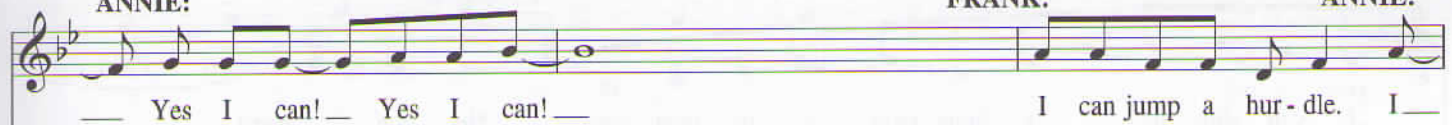


sf
mp
(b)

ANNIE:

FRANK:

ANNIE:



sf
mp

FRANK:

ANNIE:



FRANK: can't you No ANNIE: I Yes

FRANK: can't you No ANNIE: I can sing an y - thing sweet er than you.

Slower

FRANK: An y - note you can sing, I can sing sweet er. ANNIE: Neith - er can I

FRANK: I can do most an - y thing. ANNIE: Can you bake a pie? FRANK: No.

ANNIE: Yes I can. **FRANK:** No you can't. **ANNIE:** Yes I

FRANK: can. **ANNIE:** No you can't. **FRANK:** Yes I can. **ANNIE:** No you

ANNIE: can't, can't, can't. *rit.* Yes I can, can, can. **BOTH:** Yes I No you

can. can't.